

AMS™ Suite: Intelligent Device Manager Audit Trail

- Improve availability and decision-making with easily-accessible device status and history information
- Reduce documentation costs and manual input errors by automating record keeping
- Streamline maintenance and improve record-keeping

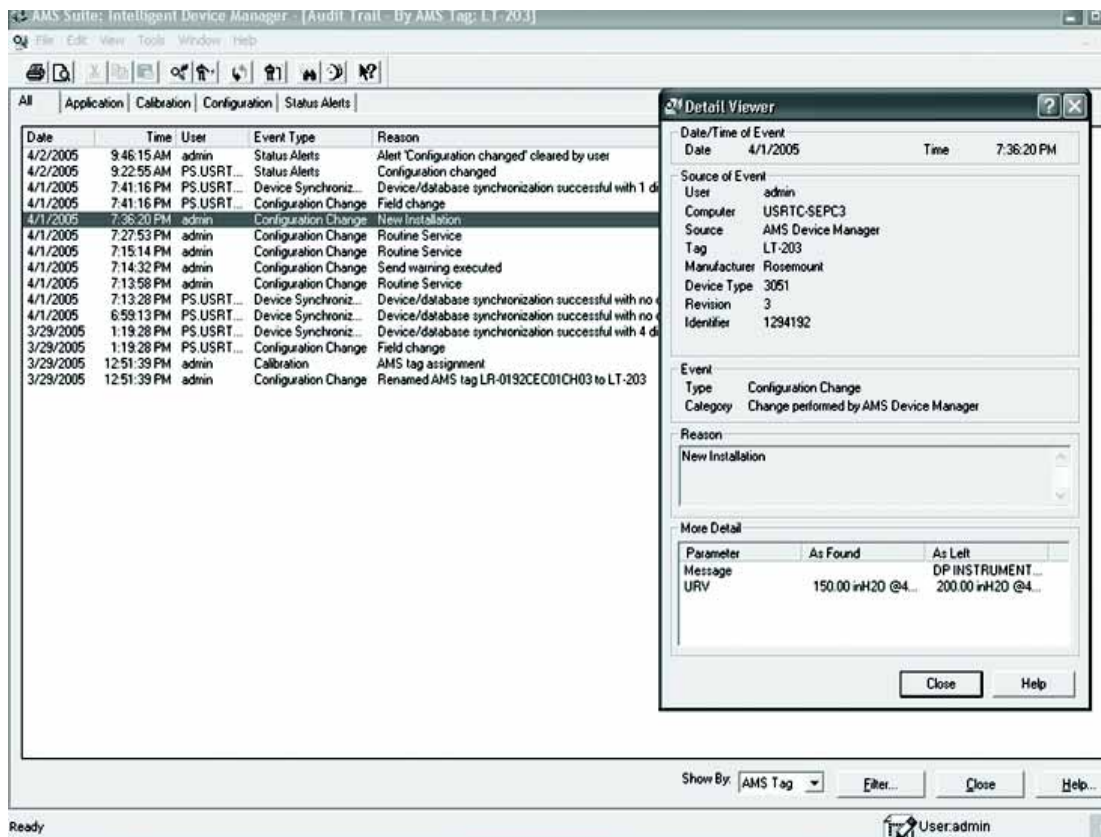


FIGURE 1. The Audit Trail enables you to contain documentation costs by automating record-keeping. All device changes are at your fingertips in an organized database.

INTRODUCTION

Keeping accurate, on-going records is essential in regulated industries — but it can be costly both in time and money. The AMS Device Manager Audit Trail automatically generates a historical record for each device. Events recorded in the Audit Trail include:

- Device configuration records: additions, deletions, and changes to device configurations
- As-found/as-left test records
- Diagnostic information
- AMS Device Manager system maintenance activities

Benefits

Improve availability with easily-accessible device status information. Find problem areas quickly without sorting through reams of paper. Perform a search and discover relevant field device information.

Reduce costs by consolidating steps. You perform a task, and then document it. But sometimes documenting a task requires more time than performing it. Save time — and money — by consolidating those steps with the Audit Trail. As you perform tasks, the Audit Trail automatically creates the necessary documentation trail.

Save time by quickly viewing device history. At a moment's notice, you can determine when a particular device was re-configured or tested and who did the work. You'll find what parameters were changed and why. Sharpen your information searches and investigate specific circumstances by filtering audit trail events.

Product description

The Audit Trail provides historical records of device configuration changes and performance.

You can access any record by clicking on the Audit Trail menu option that appears adjacent to each device. All records are date- and time-stamped, and have a user and PC correlation. To ensure data integrity, historical records cannot be edited.

Records are tied to a plant location (or tag) and to a specific device. For example, the Audit Trail for a specific tag shows all devices and changes associated with that plant location, giving a complete record of events.

The tabular format of the Audit Trail allows you to review all configuration changes or focus on a few specific changes. You can also view records for an entire plant or for a single, specific device. Quickly analyze information and act when required to keep your process running smoothly.

Device configuration records

Retain device configuration records, including device identification information like output range and materials of construction. These records can be used to help meet process safety requirements.

As-found/as-left records

For each tag, the Audit Trail records results of as-found/as-left tests. The results are stored in a historical file, which provides documentation for international standards organizations or regulatory agencies.

When reviewing the historical file, you can determine when a particular device was tested and calibrated. You can also see who conducted the test, the individual test points and errors, the serial number of the test equipment, and any notes taken during the test or calibration.

Diagnostic information

The Audit Trail stores information about status changes occurring in field devices. In fact, you can choose which status alerts trigger an Audit Trail event and which parameters should be included in the Audit Trail record.

Store field device status data such as analog output saturated condition, communication failure, device malfunction, and process variables that are out of limits.

Maintenance records

When files are backed up, uploaded, or merged from other AMS Device Manager PCs, the Audit Trail automatically records the event. This feature enables you to view instances when the database was backed up and who did it.



AMS Suite: Intelligent Device Manager powers PlantWeb through predictive and proactive maintenance of intelligent field devices to improve availability and performance.

*The Emerson logo is a trade mark and service mark of Emerson Electric Co.
Rosemount and the Rosemount logotype are registered trademarks of Rosemount Inc.
PlantWeb and AMS are a mark of one of the Emerson Process Management companies.
All other marks are the property of their respective owners.*

Standard Terms and Conditions of Sale can be found at www.rosemount.com/terms_of_sale

Emerson Process Management

Asset Optimization Division

12001 Technology Drive
Eden Prairie, MN 55344 USA
T 1(952) 828-3206
F 1(952) 828-3033

www.assetweb.com